

JETEC Type 6117

Band Pass TR Tube

GENERAL CHARACTERISTICS

ELECTRICAL

Center Frequency f2 10.7cm

Band Pass Range(V.S.W.R  
1.65 max.) 10 to 11.3 cm

MECHANICAL

Ionizable Medium Argon & water vapor

# of electrodes 3 plus entrant & exit windows

# of Keep alive electrodes 2

Dimensions See outline drawing

Mounting position Any

MAXIMUM RATINGS

Transmitter Average Power 1 KW

Insertion Loss f2 To be specified

\*Keep alive firing time T 5 sec.

Keep alive arc drop To be specified

\*Keep alive Inter-action f2 .1 DB

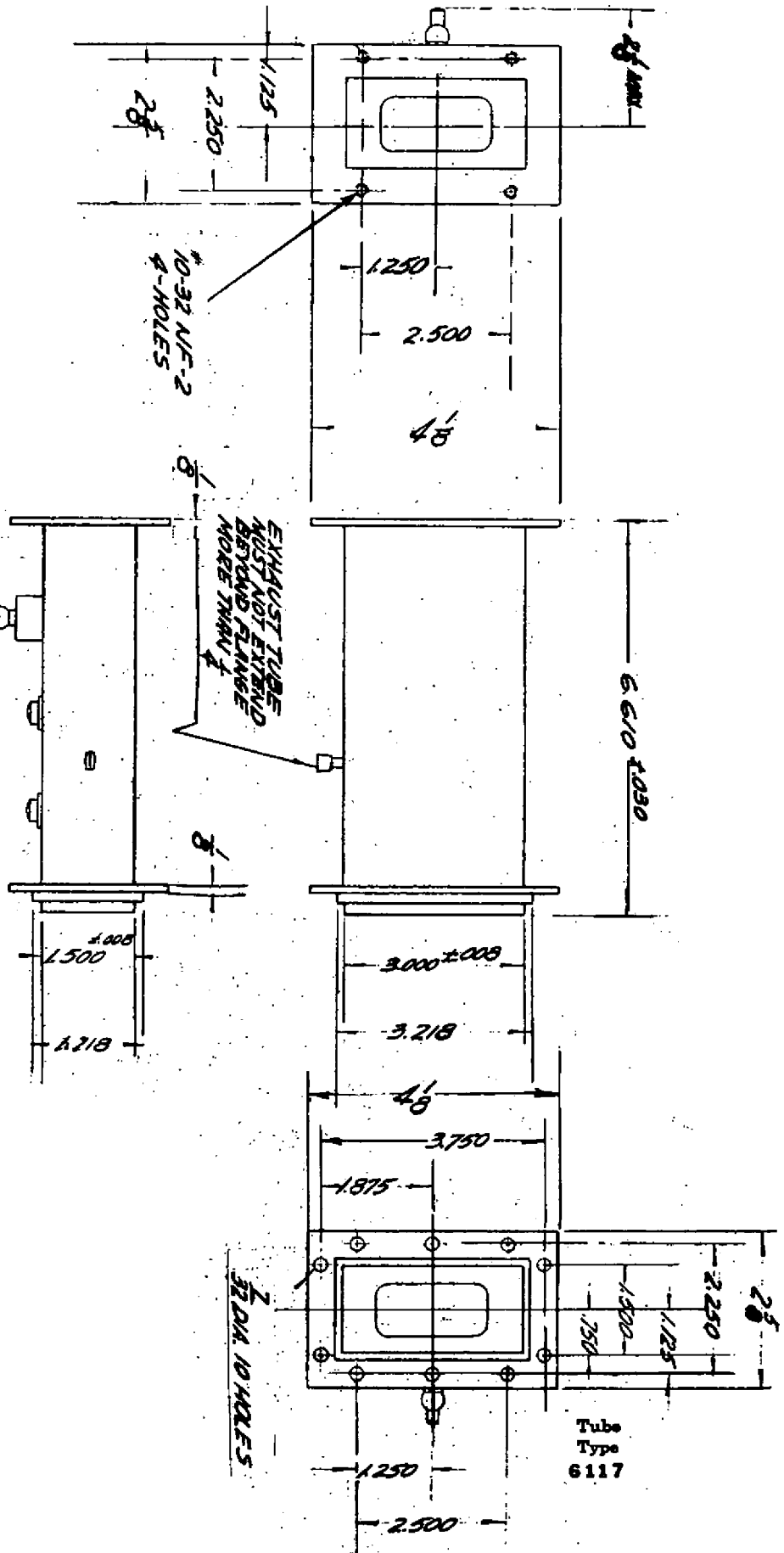
\*Leakage energy .4 ergs

Recovery time To be specified

\* Method of measuring to be specified.

*Bomac Laboratories Inc.*

Salem Road, Beverly, Massachusetts



Tube Type 6117

RADIO - TELEVISION MANUFACTURERS ASSOCIATION  
ENGINEERING DEPARTMENT



RTMA DATA BUREAU  
489 Fifth Avenue  
New York 17, N. Y.  
MUrray Hill 2-8190

Release No. 1080  
(Supplement)  
June 6, 1952

To Tube  
Engineers

On April 24, 1952 registration was made by the RTMA Engineering Office of the Jetec vacuum tube type designation

6117

on application of Bomac Laboratories Inc., Salem Road, Beverly, Massachusetts.

The following information supplements the data contained on the sheet covered by the release of that date:

GENERAL CHARACTERISTICS:

Electrical

Center Frequency.....2802 Mc.  
Band Pass (VSWR 1.65).....2659-2969 Mc.

MAXIMUM RATINGS:

Transmitter Average Power.....750 watts  
Insertion Loss (2802 Mc).....0.5 db  
Keep-alive Drop (100 ua).....300 - 450 volts  
Flat Leakage Power.....40 mw.  
Spike Leakage Energy per Pulse.....0.3 ergs  
Recovery Time (750 KW lus 1000 pps).....15 usec

Very truly yours,

*Ralph K. Batcher*

Chief Engineer

Radio-Television Manufacturers Association

RRBatcher:mg